

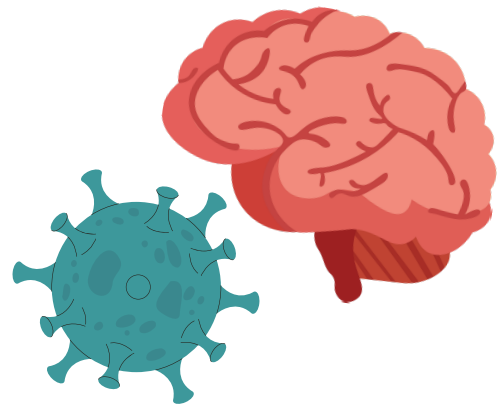
PARTICIPATE IN A RESEARCH STUDY ABOUT BRAIN HEALTH AND COVID-19

The Linseman Lab at the University of Denver is conducting a research study on the long-term impacts of COVID-19 on the brain, and whether these impacts might be worse in those with a history of traumatic brain injury.

WHO CAN PARTICIPATE?

You may be eligible if you are a male/female older than 18 who has:

- **no history** of brain injury or COVID-19
- a history of **both** brain injury **and** COVID-19
- a history of **either** brain injury **or** COVID-19



WHAT'S INVOLVED?

- A brief online screening questionnaire (~5 min)
 - An online consent session over Zoom (~30 min)
 - A (~2.5 hour) study visit at the University of Denver Knoebel Institute for Healthy Aging once per year for a period of 5-years
-

INTERESTED?

Contact the study coordinator, Allison Grossberg, via email or phone (allison.grossberg@du.edu; 719-231-9703).



UNIVERSITY of
DENVER

